

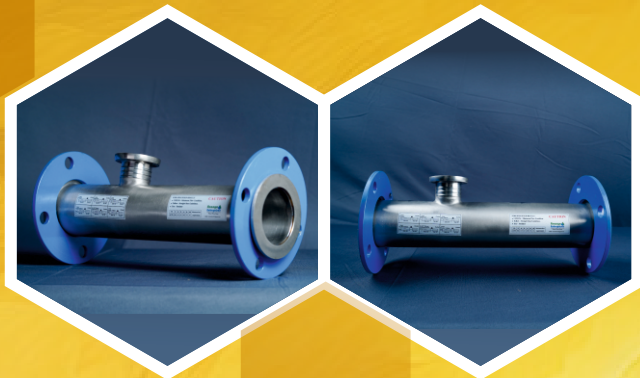
# FLOW SENSOR INSTALLATION FITTINGS

## General Description

Fittings used to connect and mount the flow meter to a pipeline. Ensuring a secure and accurate measurement of fluid flow. These fitting come in various types such as threaded end / Stubend with ms flange end / SS welded flange end / saddle etc. And chosen based on the specific pipe material, environment and flow meter type.

## Threaded End Fittings

Threaded Connection : common for smaller pipes and simpler application.



## Stubend with ms flange end fitting

Flanged connection : Used for large pipes and application requiring a more robust and leak proof connection.



## SS Welded flange end fitting

Welded fitting : The flow meter is directly welded into the pipe creating a permanent connection.

### Manufacturer of

- ✓ Flow meter
- ✓ Flow sensor
- ✓ Self priming
- ✓ Reversible pump



MADE IN INDIA

99706 06070 / 96651 55905

sales@ananyaenterprisespune.com

www.ananyaenterprisespune.com

Survey no-109, Shree Laxmi Residency, A-401, Raikar mala,  
near Maruthi mandir, Dhayari, Pune-411 041, Maharashtra.